



AREA CON RUMORE
SUPERIORE A 85 dB(A)
È OBBLIGATORIO
L'USO DI PROTEZIONI
ACUSTICHE

7

**AIDA
1500**

ST **ES 0244** L9TO

ES M6/D5

SICK
C-4000

SICK
C-4000



TENSIONE IN LINEA COMANDI INIEZIONE COMANDI PRESSA PRONTA

ARRESTO MOT. PRINC MARCIA MOT. PRINC MOT. PRINC AV. TND

CONT-AUT

3

4

1) ESCLUSO
 2) REGISTR.
 3) SINGOLO
 4) AUTOMATICO

SIEMENS

SIMATIC PANEL



AIDA



QUADRO
SOTTO
TENSIONE

24 VOLT
400 VOLT





AREA CON RUMORE
SUPERIORE A 85 dB(A)
È OBBLIGATORIO
L'USO DI PROTEZIONI
ACUSTICHE

**AIDA
1500**

1) ESCLUSO
2) REGISTRA.
3) SINGOLO
4) AUTOMATICO

PRESSA PRONTA
INSEZIONE
TENDI
ARRESTO
TONT-AUT

SIEMENS SIMATIC PANEL

205030

ST FRIGERI FS 024 LTO

FRIGERI

03750



AIDA[®]
Europe

AIDA S.r.l.

Corso Europa, 240
23801 Calolziocorte (LC)
Italia
Tel. +39 0341 634111
Fax +39 0341 634154



MAIN VOLTAGE TENSIONE RETE	400	V	PHS NO N° FASI	3	Hz	50
FULL-LOAD CURRENT CORRENTE A PIENO CARICO	30					A
SHORT CIRCUIT BREAKING CAPACITY POTERE SEZIONAMENTO TOTALE	45000					A
MAIN MOTOR POWER POTENZA MOTORE PRINCIPALE	11					KW
INSTALLED POWER POTENZA INSTALLATA	15					KW
AUXILIARY VOLTAGE TENSIONI AUSILIARIE	24					V
PROJECT SCHEMA ELETTRICO N°	C05492					
TYPE OF MACHINE TIPO MACCHINA	NC1-1500 (2)					
SERIAL NUMBER N° MATRICOLA	C05492					

**EQUIPMENT MADE IN COMPLIANCE WITH
CEI EN 60204-1 STANDARDS**

L'APPARECCHIATURA ELETTRICA È REALIZZATA
IN CONFORMITÀ ALLE NORME CEI EN 60204-1



AIDA

AIDA ENGINEERING, LTD.

SERIAL NO. _____

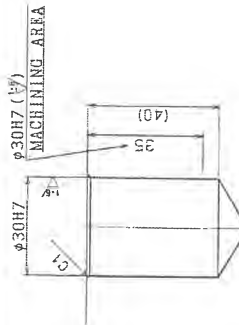
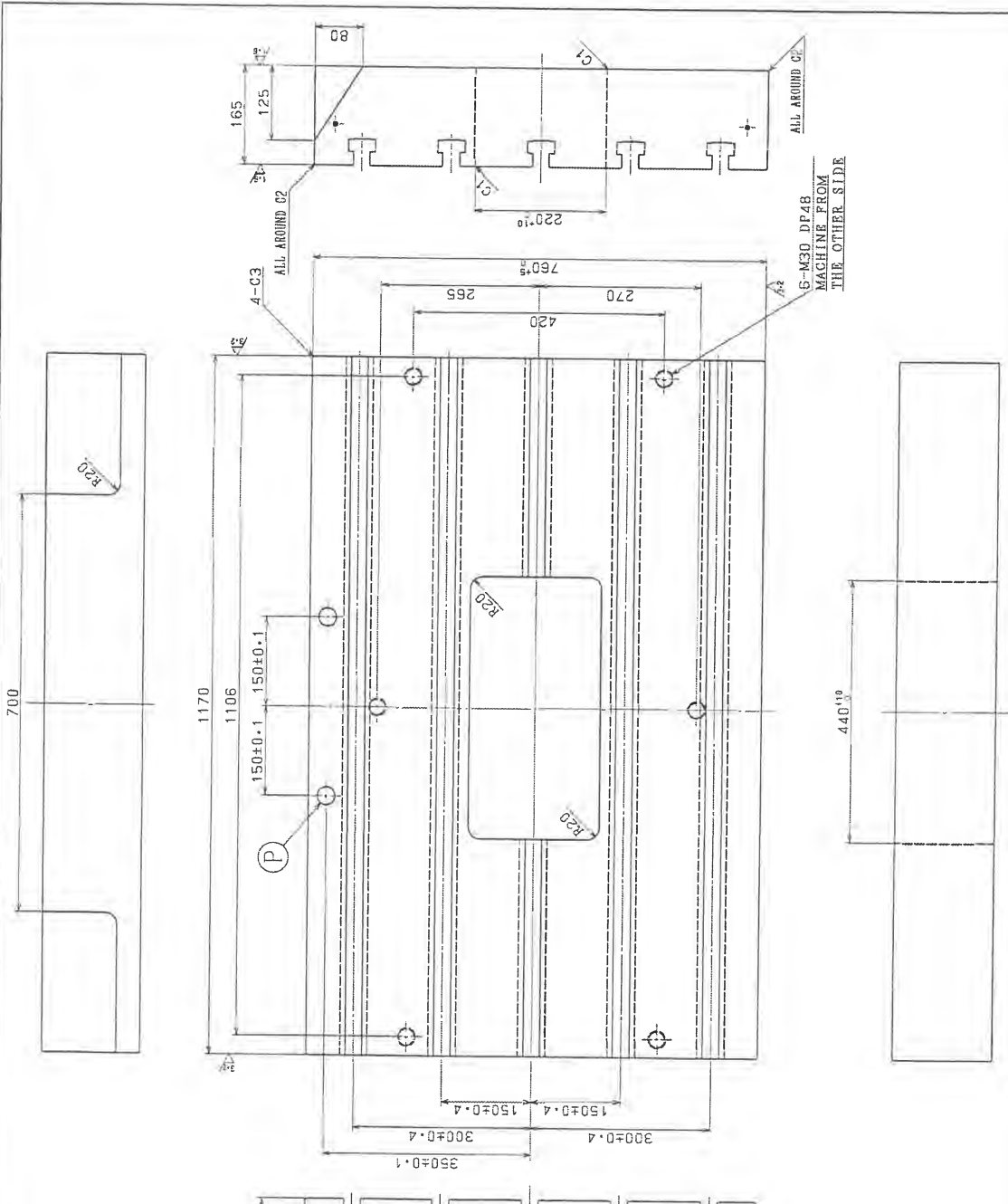
JAPAN

MODELLO	NC1
CAPACITA'	1500 kN
CORSA SLITTA	200 mm
CICLI A VUOTO	30-55 c/m
ALTEZZA STAMPO	400 mm
REGOLAZIONE SLITTA	100 mm
DIMENS. PIANO SLITTA: S.DxF.R	700x580 mm
DIMENS. PIANO INFERIORE: S.DxF.R	1170x760 mm
MOTORE PRINCIPALE	11 kW
PRESSIONE IMP. PNEUMATICO	0,5 MPa
PESO MAX STAMPO SUPERIORE	290 kg

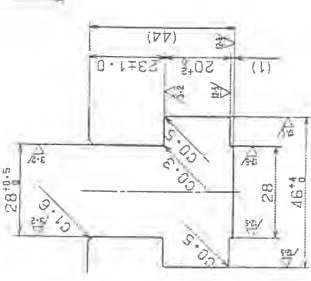
288051

PRECAUZIONI PER LA PREVENZIONE IN...

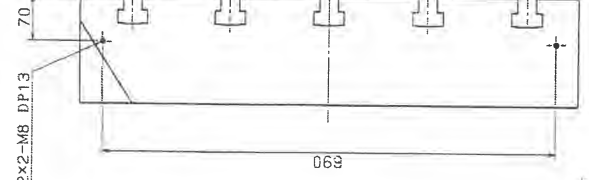
2010 AIDA 150 TONN. CE



DET. P (S=1:1)
2 PLACES



DET. T-SLOT
(S=1:1)



2x2-M8 DP13

B-21

MACHINING TOLERANCE (mm)	2.01	2.02	2.03	2.04	2.05	2.06	2.07	2.08	2.09	2.10	2.11	2.12	2.13	2.14	2.15	2.16	2.17	2.18	2.19	2.20																																			
MAX. 2-DEC. INCL.																																																							
MIN. 2-DEC. INCL.																																																							
MAX. 2-DEC. INCL.																																																							
MIN. 2-DEC. INCL.																																																							
MAX. 2-DEC. INCL.																																																							
MIN. 2-DEC. INCL.																																																							
MAX. 2-DEC. INCL.																																																							
MIN. 2-DEC. INCL.																																																							

REV.	DATE	REVISION	DATE	SIGN

MAT. PC350
MT. WT. 1.508
SCALE (1:5)
DATE
SHEET NO. 2 OF 2

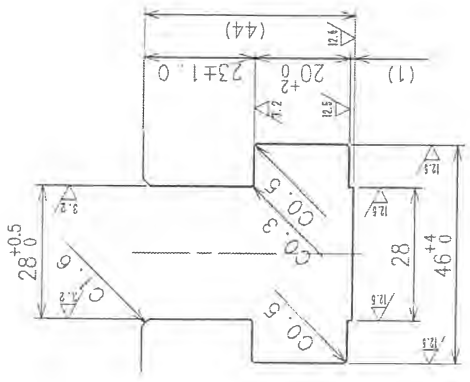
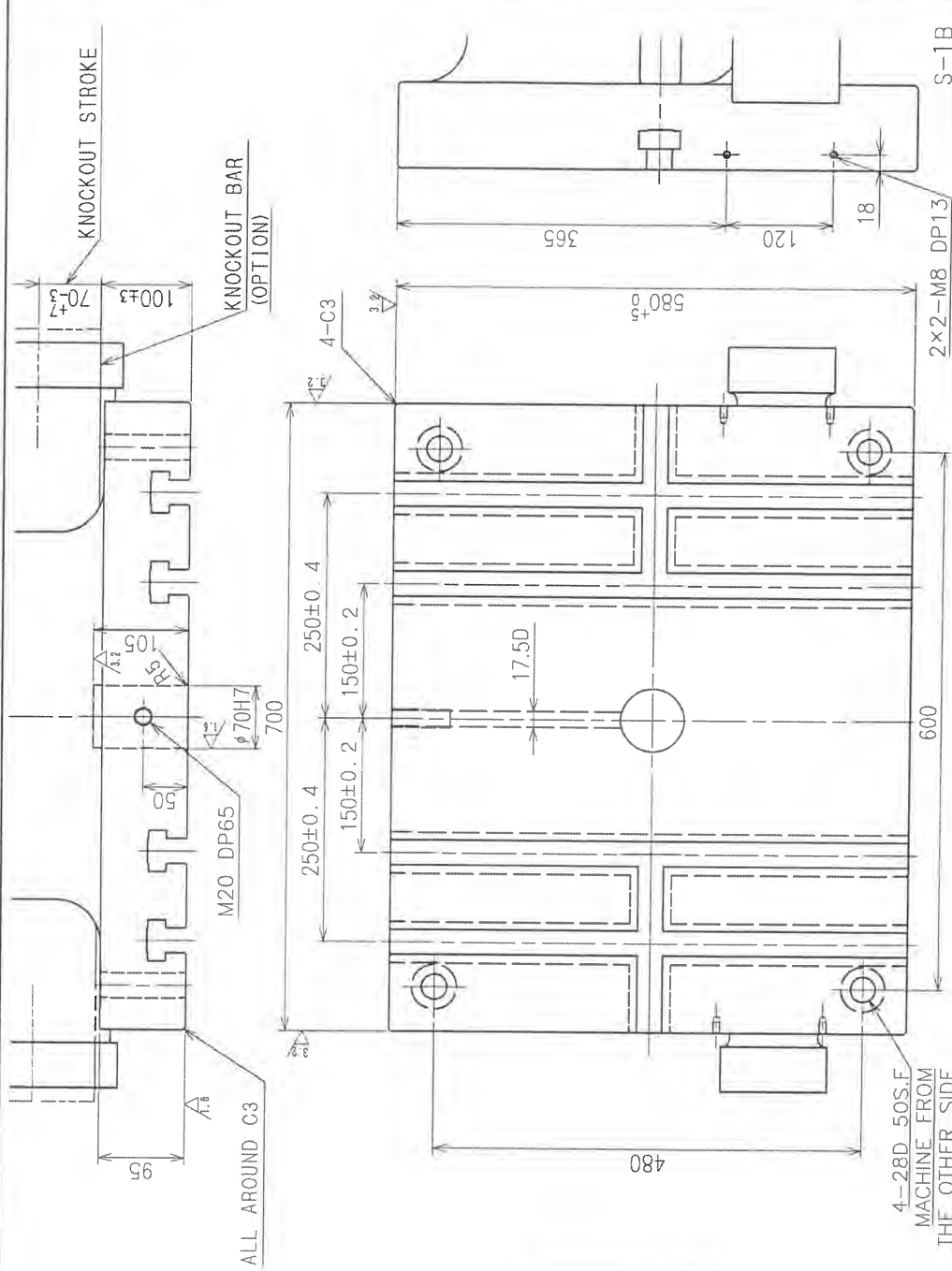
MODEL NAME NC1-1500 (2)
PART No. 208-20428
Z-603

269051 AIDA ENGINEERING, LTD.

2010

AIDA 150 TONN.

CE



DET. T-SLOT
(S=1:1)

This drawing contains the confidential and proprietary information of AIDA ENGINEERING, LTD. Which should be kept in strict confidence and should be used only for the purpose of maintenance of AIDA's equipment.

MACHINING TOLERANCE (mm)	SYMBOL OF SURFACE FINISHING	ΔX
0.5 TO 6	± 0.1	ΔX
OVER 6 TO 30	± 0.2	ΔX
" 30 TO 120	± 0.3	ΔX
" 120 TO 315	± 0.5	ΔX
" 315 TO 1000	± 0.8	ΔX
" 1000 TO 2500	± 1.2	ΔX

MAT.	QTY	MODEL	DWG. No.
		NC1-1500	
MAT.WT. kg	DATE	SCALE	NAME
		(1:5)	SLIDE DIE SPACE
REVISION	DATE	SIGN	PART No.
			308-32165
			Z-601

AIDA ENGINEERING, LTD.